

# Enity EMS

## End-to-end energy management solution



Driven by your data



# Driven by **your data**

What journey is your business on?  
Ambitious decarbonisation goals? Streamlining operations?  
Driving down costs? Digitalisation? Whatever the destination,  
getting there relies on having the consumption data you  
need to take each new step with confidence.

Since 1997 when we created Denmark's first energy management system, we've been guided by the ambition to create the most innovative energy management platform to become the ideal travelling partner on our customers' energy reduction journeys. This passion for solving real world business problems with technology means that we can stay in step with our customers' businesses and one step ahead of a rapidly changing energy landscape.

When it comes to the health of our customers' businesses, our society, or the environment, we don't believe in standing still. We believe the way forward can be found in the numbers and that's why we're **driven by your data**.



# A complete End-to-End energy management solution

We're more than just an EMS. We advise and guide you through the entire energy management process – from planning and implementation to continuous optimisation and advisory support.

This means you get the data you need to go after your company's optimisation, digitalisation, and sustainability targets without your energy management system and climate tracking and accounting becoming a time-consuming project.

## 4 Intelligent Energy Management

Real-time monitoring, analysis, and optimisation of your energy and resource consumption – all within one platform.

## 10 EMS-based Carbon Accounting

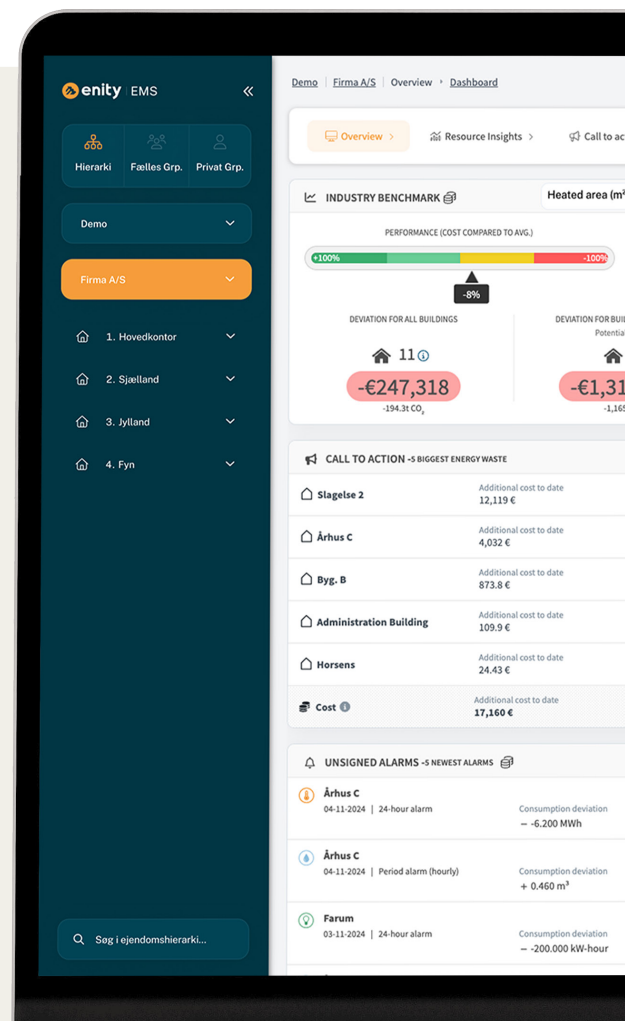
Save time and energy on documenting your company's carbon footprint – by repurposing data you already possess. In line with ESG, CSRD and ISO 50001 standards.

## 16 Support Services

All Enity customers benefit from a basic service included as standard. In addition, we offer two add-on service concepts – each tailored to support customers based on where they are in their energy management journey.

## 16 Technology & Upgrades

We guarantee our customers and partners a solution that is constantly evolving, growing bigger and stronger over time – free and easy to upgrade.

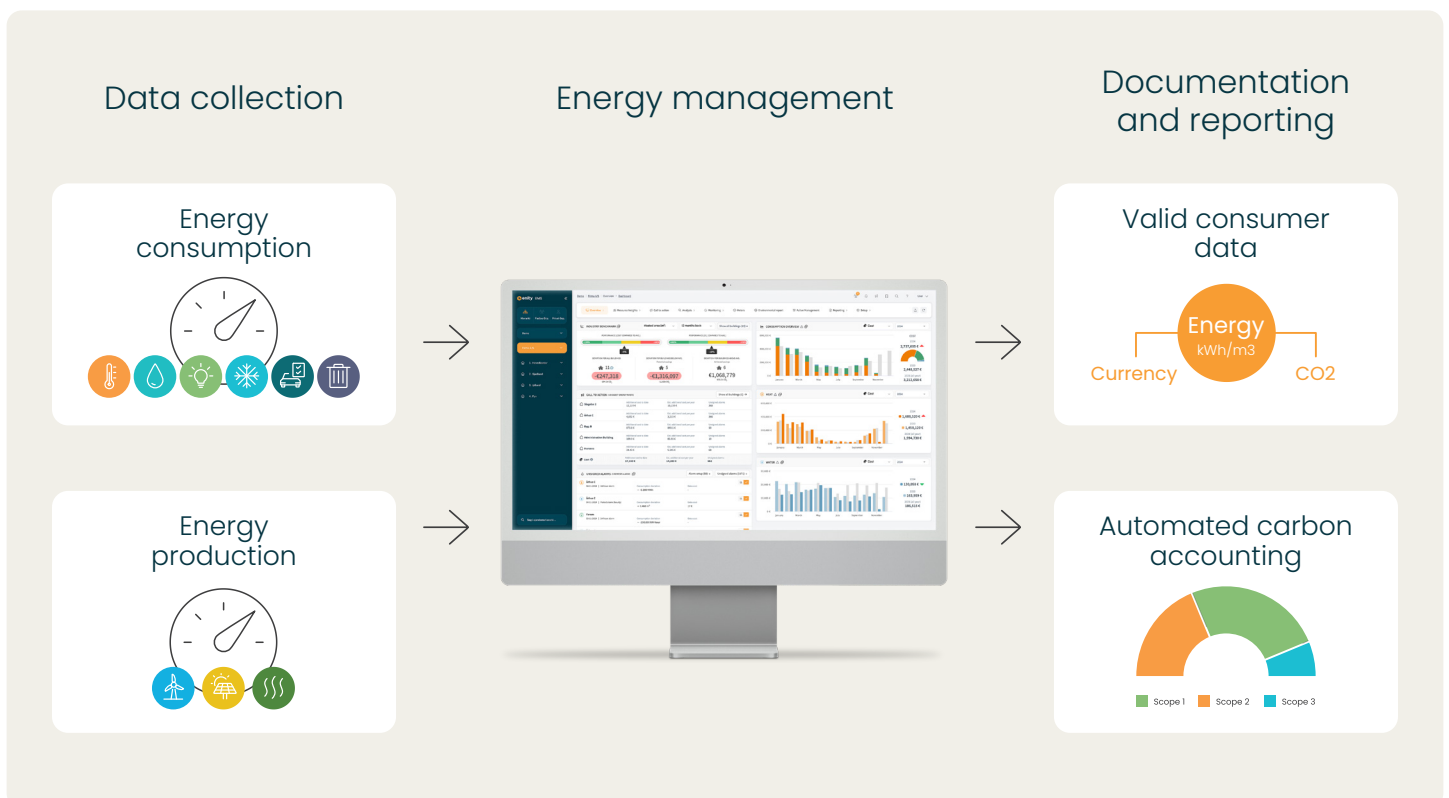


# One platform for all your consumption data

Enity EMS is an advanced digital energy management platform that helps businesses and public institutions monitor, analyse, and optimise their energy consumption.

The system automatically collects energy and resource data via remote meters and provides a clear overview of both consumption and production. Enity EMS gathers real-time data across all energy sources and consumption areas.

With automated analytics, alarms, and reporting, Enity EMS makes it easy to identify savings potential – in consumption, costs, and CO<sub>2</sub> emissions. The results are documented in various types of reports, including a climate and environmental report prepared in accordance with the GHG Protocol's Scope 1, 2, and 3.





### Ensure compliance

Ensures you meet ISO 50001, CSRD, and ESG requirements with ease.



### Save time

Reduce manual work by automating processes like data collection and reporting.



### Reduce costs

Control budgets and identify savings instantly through smart analysis and insights.



### Gain real-time overview

Track your carbon footprint and resource consumption in real-time — with full transparency and valid data you can rely on.



### Automate carbon accounting

With a single click, easily generate your climate report in compliance with the GHG Protocol (Scope 1, 2 & 3).



### Make data driven decisions

Transform complex data into actionable intelligence, enabling smarter, fact-based decisions.

# 10–30%

### Energy consumption reduction

Intelligent Energy Management improves energy efficiency and detects energy and resource waste in real time — helping you reduce consumption by 10–30%.

# Smart and intuitive energy management

Our energy management platform is designed to make energy optimisation simple and transparent – whether you're an energy engineer or not. With a user-friendly and intuitive interface, you quickly gain access to key data, savings, and actionable insights.

Identify energy waste with advanced analytics and alarms, automated budgeting and reporting to save time, and visualize the financial and environmental impact of your optimisation efforts. It's easy to identify savings in energy and resource consumption, CO<sub>2</sub> emissions, and costs – helping you make smarter, data-driven decisions.

1

## **Ressource Insights - Overview**

Flexible benchmarking of actual and adjusted consumption at any hierarchical level, including totals and identification of deviations from other periods.

2

## **Standby Analysis**

Detect excessive energy use outside operating hours – simple to correct and offer significant savings.

5

## **Building Benchmark**

The tool enables you to compare your company's buildings with similar buildings in the database – helping you prioritise and identify which ones require urgent attention.

1

## **Ressource Insights - Energy models**

Gain insights into energy efficiency with regression analyses and energy models for meters and buildings.

3

## **Dashboard & Overview**

Complete view across locations, buildings, meters and energy sources.

6

## **Carbon Accounting**

Climate report in one single click – using existing consumption data to document your carbon footprint compliant with the GHG protocol and in line with ESG, CSRD, and ISO 50001 requirements.

1

## **Ressource Insights - Analysis**

Flexible graph-based analysis of multiple data series across buildings and meters in the desired resolution.

4

## **Alarms & Call-to-Action**

Detect anomalies like overconsumption and system failures, providing real-time alerts to prevent energy waste.

7

## **Documentation & Reporting**

Customize and automate your reporting. Send reports with different specified frequencies directly to your stakeholders.

# 1-2 years

## Payback period

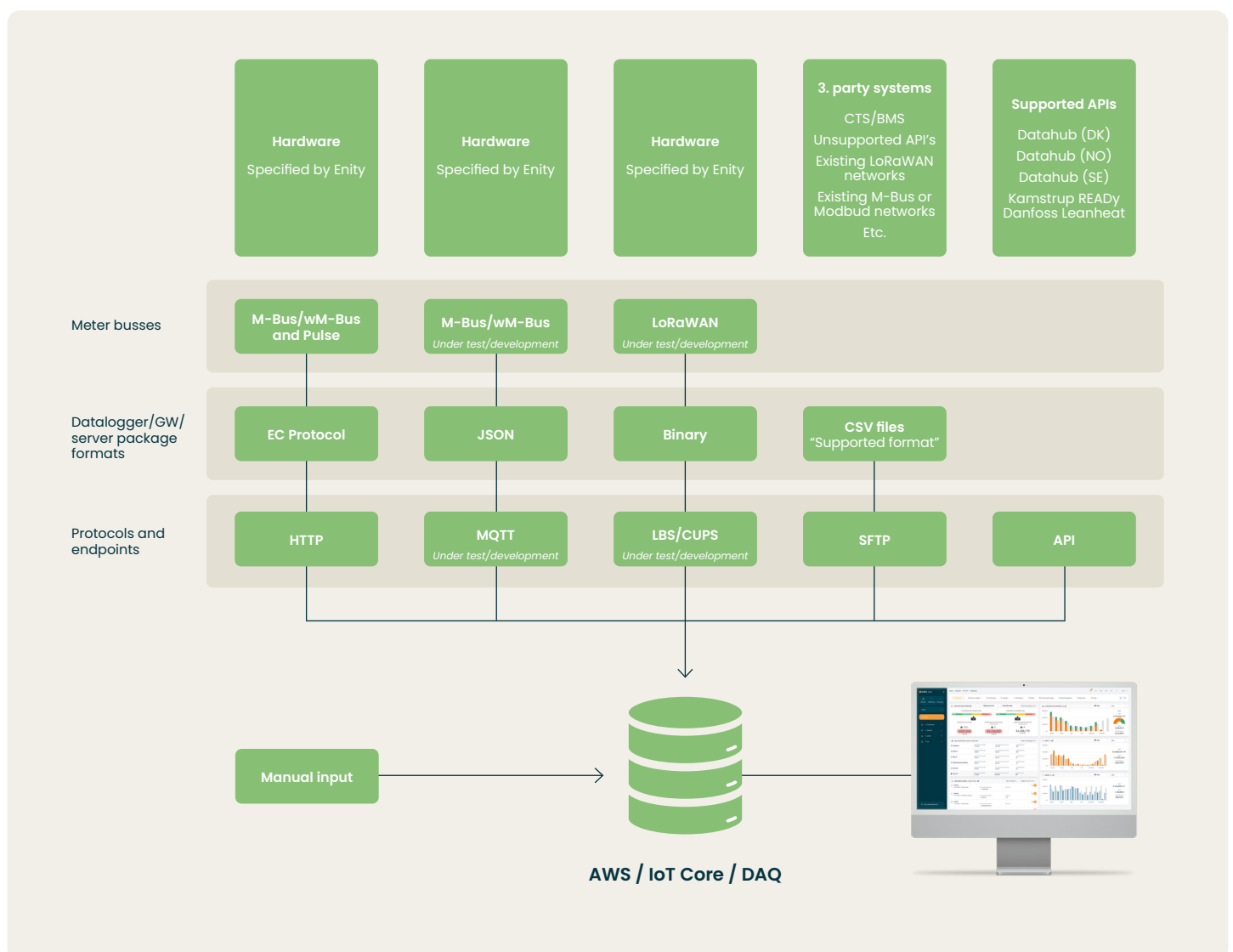
The energy savings cover the investment, with a typical payback period of 1-2 years.



# Seamless data integration for smarter connectivity

A future-proof Energy Management System (EMS) requires seamless data integration from multiple sources.

Our open interface ensures full flexibility, allowing you to connect with any data source – from smart meters, building management systems, and IoT devices to facility management, waste management, and fleet systems. Our EMS adapts to your existing infrastructure, ensuring smooth integration with third-party software via APIs. Whether you need to consolidate data, enhance sustainability reporting, or optimise operations, our open platform provides the connectivity you need.





An aerial photograph of a two-lane asphalt road winding through a dense forest. The trees are in various stages of autumn, with some showing bright orange and yellow foliage, while others remain green. A white semi-truck is visible on the road, moving away from the viewer. The top right corner of the image is overlaid with a dark teal shape containing the text.

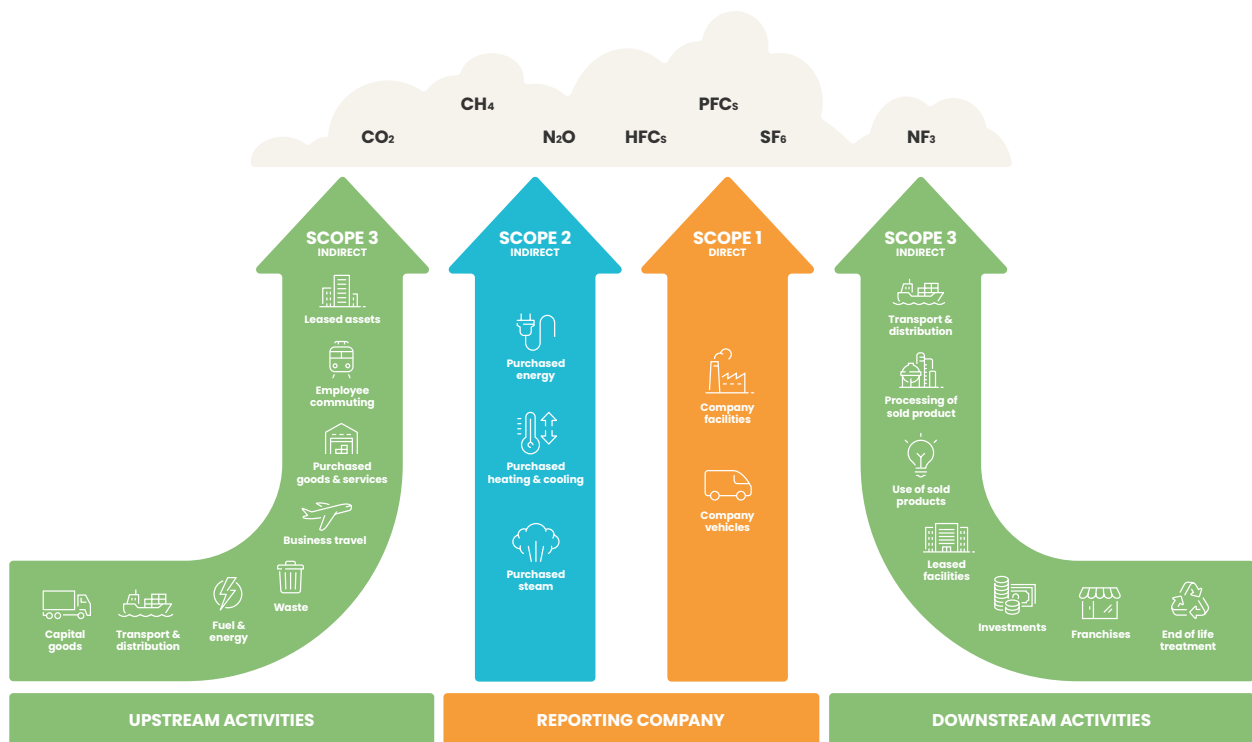
# Meet compliance with Enity



# How we support your carbon accounting

The Enity EMS-based climate reports present a full overview of your company's carbon footprint.

We deliver data collection and databases for the consumption-based reporting in the context of energy and resources. Your carbon emissions are documented in an automated climate report to facilitate compliance with the applicable requirements – directly from the system.



## Your company's climate impact is calculated in GHGP scopes

Climate impact from energy and resource consumption is calculated within GHGP scopes 1, 2, and 3, providing carbon footprint insights for water, energy, transport, and waste.

Consumption data is automatically recorded and presented in monetary terms, kWh, tCO<sub>2</sub>, and tCO<sub>2</sub>/m<sup>2</sup> and categorized into scopes. Additional climate-related activities can be manually entered, allowing you to enhance your report with supplementary data.



### Environmental data for ESG reporting

ESG reporting is the successor to CSR reports and has set the standard in recent years. ESG comprises three reporting tracks (Environment, Social, Governance). We exclusively supply data bases in the "Environment" category.

This category includes:

- Energy consumption (electricity, heating, cooling, natural gas, etc.)
- Renewable energy production (wind turbines, solar power plants, surplus heat, etc.)
- Water consumption
- Waste
- Scopes 1, 2 & 3 (cf. the GHGP)



### Environmental data for CSRD reporting

The CSRD Directive is the basis for "next generation sustainability reporting", providing information about company's impact on the environment. We calculate climate impact under scopes 1, 2 and 3, and provide you with a figure for the company's total impact.

CSRD features four reporting tracks (General, Environment, Social, Governance). We exclusively supply data bases in the "Environment" category, which is consumption-based, and collect the data in a single set of accounts that you can include in your consolidated CSRD report, including the following ESRS:

- E1 Energy consumption
- E3 Water consumption
- E5 Waste

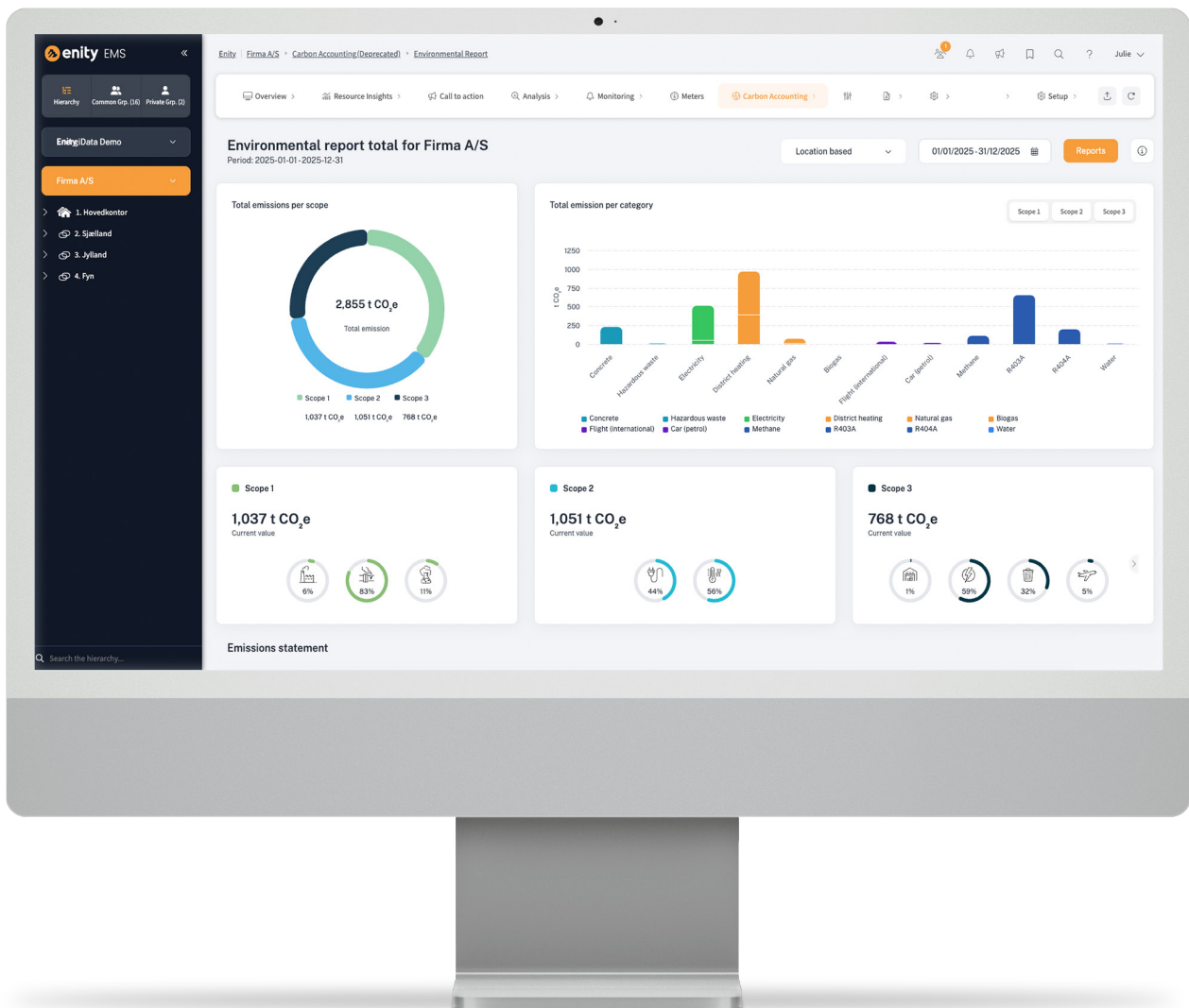
### Include any kind of consumption in your carbon accounting

Measure any kind of consumption by creating custom meter types and assigning your own emission factors. This allows you to include exactly the data you need in your carbon accounting. You can also integrate data from other systems such as fleet, building, and waste management to get a complete view of your environmental impact.

Enity EMS is an open, fully integrable platform, with the capacity to interact with other systems in your climate & environment setup.



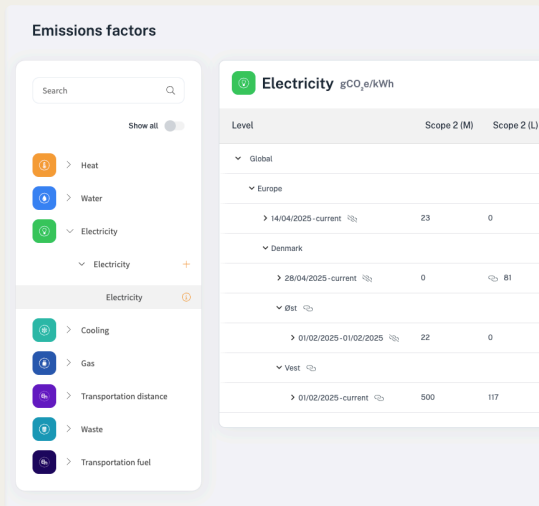
# Feature highlights of Enity Carbon Accounting



## Carbon accounting dashboard

Gives users a **clear, real-time overview** of their organisation's emissions and climate performance — from total footprint to actionable insights. The dashboard transforms complex emissions data into clear, actionable insights — enabling organisations to monitor, report, and reduce their carbon footprint with confidence.





## Emission factors – advanced method

The solution uses advanced methodology for calculating emission factors – as a key element in understanding and reducing a company's climate impact. Emission factors are linked to different types of meters, referred to as "emission types."

This allows users to create specific variations of these meter types, which facilitates more targeted use of the analysis features.

## Documentation & reporting

There is an emphasis on structure and consistency in reporting to ensure uniform reporting over time.

- All data can be exported to document any fundamental CO<sub>2</sub> calculations.
- A new "Save report" feature allows for the preservation of earlier versions.
- Files containing sources on emission factors will be included.

## The built-in CSRD format

- The system aligns data from EMS with climate reports and carbon accounting to specific sections in CSRD.
- Gives you regular and consistent annual reporting.
- Customisation options and the ability to add comments.

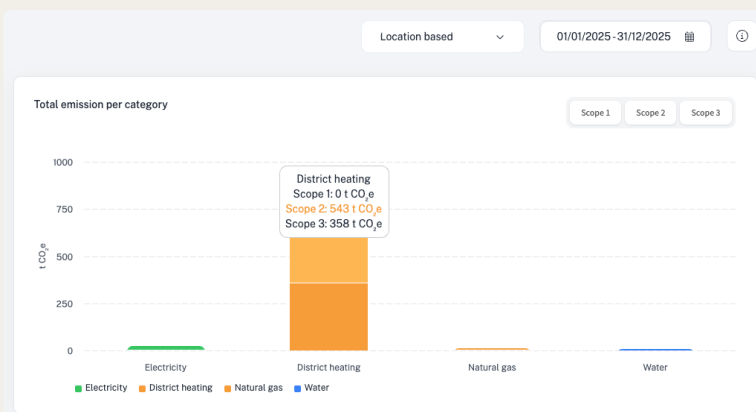
**Corporate Sustainability Reporting (Environment)**

Search	Quick search...
<b>E1 Climate Change</b>	<b>Gross Scopes 1, 2 and 3 Total GHG emissions</b> §
E1.1 Transition plan for climate change mitigation	<b>Gross Scope 1 greenhouse gas emissions</b> 48 a
E1.2 Policies related to climate change mitigation and adaptation	Stationary combustion AR 43 a
E1.3 Actions and resources in relation to climate change policies	Mobile combustion AR 43 a
E1.4 Targets related to climate change mitigation and adaptation	Fugitive emissions AR 43 a
E1.5 Energy consumption and mix	Process emissions AR 43 a
<b>E1.6 Gross Scopes 1, 2 and 3 Total GHG emissions</b>	<b>Gross location-based Scope 2 greenhouse gas emissions</b> 49 a, 52 a
E1.7 GHG removals and GHG mitigation projects financed through carbon credits	Electricity AR 45 b
E1.8 Internal carbon pricing	District heating AR 45 b
E1.9 Anticipated financial effects from material physical and transition risks and potential climate-related opportunities	District cooling AR 45 b
<b>E2 Pollution</b>	District steam AR 45 b
	<b>Gross market-based Scope 2 greenhouse gas emissions</b> 49 b, 52 b
	Electricity AR 45 b
	District heating AR 45 b
	District cooling AR 45 b

## Benchmarking

The building benchmark analysis compares your company's buildings with similar buildings in our EMS database. Prioritises the energy efficiency efforts with the highest climate impact

- Supports setting realistic CO<sub>2</sub> reduction targets
- Enables data-driven baselines and follow-up



## Multiple scope values

Increased adherence to the GHGP.

- Enhanced alignment with the GHGP approach using subcategories for each scope.
- The system can showcase totals that are either market-based or location-based.
- Capability to monitor emissions that extend beyond the scopes defined by GHGP, in line with its recommendations.

# ISO 50001 Certification with Enity EMS

With Enity EMS, we provide the tools and support to help you easily achieve ISO 50001 certification.

Our platform combines automated data collection, real-time energy consumption monitoring, and advanced analysis tools like key figures, regression analyses, and custom reports. We not only offer the technology but also expert guidance from our team of energy consultants, ensuring you have the necessary support every step of the way. Enity EMS helps you improve efficiency, track energy-saving initiatives, and maintain compliance with ISO 50001 standards.

From data validation and action plans to audits and continuous improvement activities, Enity EMS ensures you meet your energy management goals, streamline your certification process, and stay aligned with sustainability objectives.

## Enity functions and services that support your ISO 50001 certification

### Resource Insights

Overview of energy and resource consumption. Identify deviations and prioritize your efforts.

### Analysis tools

Key figure and regression analysis, accurate master data, custom reports in Excel with EnPI and EnB.

### Energy models

EnPI's such as baseload, base temperatures, heating/cooling degree days, etc.

### Logs

Notifies relevant employees when deviations are registered.

### Data collection & monitoring

Automated data collection and monitoring of energy consumption.

### Reporting

Customized and automated reporting.

### Data validation

Customers are informed of meter errors and registered deviations.

### Tracking

Tracking of efficiency improvements.

Coming in 2025

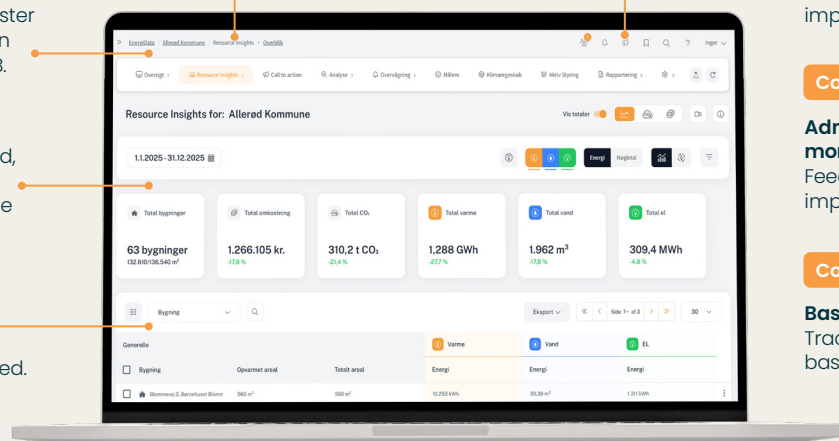
### Administration & monitoring of action plans

Feedback loop for continuous improvement.

Coming in 2025

### Baseline & targets

Track progress from your baseline to your targets.



Enity EMS is BAFA-listed in Germany, meaning this EMS platform is officially approved by the German authority BAFA (Federal Office for Economic Affairs and Export Control) as a tool supporting energy efficiency and energy management.



# More than just an EMS

At Enity, we don't just sell an EMS – we provide an end-to-end solution that ensures you get the most out of your energy management system from day one. Our goal is to make energy management as simple and efficient as possible, so you can focus on your core business while we take care of energy

**All Enity customers benefit from a basic service included as standard when choosing the Enity EMS, with no additional costs.**



## **Project implementation**

From the moment you sign the contract, we work closely with you to set up and implement the system, tailoring it to your specific needs for maximum impact.



## **Dedicated Key Account Manager**

After implementation, your Key Account Manager ensures that data is correctly received in the system, alerts you about missing data, and continuously supports you in optimising your EMS solution.



## **Ongoing support & system enhancements**

- Free expert support
- Automatic free software upgrades
- Secure backups
- Enity trainings suite
- Customer Portal

**In addition to our standard package, you can add one of two service levels – depending on how much internal capacity and expertise you have:**



## **Meter Service**

**Meter Service** is ideal if you don't have the resources to monitor data quality in-house. We make sure all remotely read meters report correctly and consistently to your EMS platform.



## **Full Service**

**Full Service** builds on the Meter Service and adds expert energy consulting. Your dedicated Energy Consultant works closely with your team to analyse your energy data, identify savings potential, and continuously optimise your energy performance.



# Choose your service level

Our service concepts are designed to provide your company with the level of energy management you need – today and in the future. The following table outlines the services included at each service level.

		Basic	Meter Service	Full Service
Daily services	Support by phone and email - Company administrator - Standard user	●	● ●	● ●
	Alarm setup on new water meters	●	●	●
	Ongoing correction of consumption data, negative consumption, meter splits, counter rotations and zero consumption.		●	●
	Automatic technician's visit to correct meter errors		●	●
	Analysis of overconsumption			●
Weekly services	Check for missing data in EMS from remotely read data sources	●	●	●
	Notification of meter errors	●	●	●
	Set-up of standard alerts on newly installed principal water meters	●	●	●
	Check for negative consumption and abnormal zero consumption from remotely read data sources		●	●
	Analysis of abnormal standby (night time) consumption			●
Monthly Services	Check for missing data in EMS from manual read data sources	●	●	●
	Check for meter changes (replacement and counter reversals)		●	●
	Check for unusual spikes in consumption		●	●
	Providing list of meter errors		●	●
	Analysis of budget deviations with the emphasis on the areas of greatest deviation, typical filter point: 25%.			●
	Analysis of poor cooling on district heating			●
	Analysis of KPIs in the customer's property portfolio			●
	Analysis of Benchmark via key-figures			●
	Notifications of non-conforming over-consumption			●
	Follow-up on energy saving potential			●
	Sparring with an energy advisor			●
Quarterly Services	Consolidated list of missing data in EMS from remotely read data sources	●	●	●
	Reporting of expected and realised energy savings			●
	Onsite meeting with energy advisor			●
Yearly Services	Seeting up next years budget			●
	Support and input for annual report			●
	Support and input for carbon accounting			●
Assigned Energy Consultant	Regular operation meetings			●
	Quarterly meetings of up to 2–3 hours with the emphasis on potential savings from Enity EMS			●
	Support for management – and annual reports including carbon reports			●



Enity is a Danish CleanTech SaaS company specializing in an intelligent Energy Management System (EMS) that empower businesses with actionable insights and full control over their energy data.

For over 20 years, our core platform, Enity EMS, has enabled organisations to monitor energy use, optimise consumption, and drive sustainability initiatives – helping them reduce costs and achieve climate goals. Our scalable solution, including powerful add-ons like carbon accounting modules, transform complex energy data into strategic decisions that support a smarter, greener future.

Backed by the leading energy company OK, Enity operates independently with a passionate team of 75 employees. Our headquarter is located in Køge (Copenhagen area, Denmark), with regional offices in Viby (Aarhus, Denmark) and Duisburg (Germany). Trusted by international partners and companies across industries, our technology is sold in 20 countries through local sales offices and global partners. We are committed to turning sustainability goals into practical, impactful solutions, closing the gap between green ambitions and resource consumption reality.

**Enity A/S**  
Centervej 5  
4600 Køge  
Denmark

**Enity A/S**  
Åhave Parkvej 11  
8260 Viby J  
Denmark

**Enity GmbH**  
Keniastraße 12  
47269 Duisburg  
Germany

[www.enity.io](http://www.enity.io)

**Driven by your data**

